

MIDSCI™

2024 PCR GUIDE

Plus most popular products!



ORDER TODAY! midsci.com • custserv@midsci.com • 800.227.9997 • f: 636.225.9998

TABLE OF CONTENTS

3 •• PCR/qPCR Plates

6 •• PCR/qPCR Plastics

9 •• PCR/qPCR Reagents

12 •• PCR/qPCR Equipment

20 •• Liquid Handling

23 •• Tubes

26 •• Cold Storage

29 •• General Equipment

30 •• Gloves

Large Enough to Deliver – Small Enough to Care

This isn't just a fancy slogan – It's our mission! But what does it mean for you?

We are proud to have been trusted by so many customers over the last 40+ years in helping them source their supplies & equipment. Located centrally in the middle of the USA in Fenton Missouri, you can rely on us today, tomorrow, and well into the future. We can and will DELIVER for you!

If you have a question or problem, we are a mere phone call away. You can contact us Monday-Friday during regular business hours and speak directly to one of our in-house customer service specialists. You will not have to wade through endless phone prompts only to be sent overseas. Our team is here in the USA, located at our HQ in Fenton, MO. If you prefer to be contacted by email, we will reply within 24 hours, so please don't hesitate to reach out that way as well. We take great pride in showing our customers how much we CARE and look forward to proving that to you. We are here to help!

We understand you have many choices of where to source your supplies and equipment. If you have been one of our customers over the years, thank you, we appreciate you and your loyalty. If you haven't had the chance to experience the MIDSCI difference yet, we'd love to show you what we're all about! Our mission is to make your life easier by providing outstanding service and products that you can count on.

Large Enough to Deliver – Small Enough to Care.

Sincerely,

Mike Degenhart
President & CEO

If you can't find it here, give us a call at 800-227-9997 or email us at tech@midsci.com



FB.me/midsci



www.linkedin.com/company/midsci

MIDSCI assumes no liability for printing errors, mistakes, or product changes. All prices subject to change without notice.

**All promotions valid 01/01/24-03/31/24, unless otherwise noted. Promos cannot be combined with any other promotions or discounts.
All terms and conditions apply. Visit our website for more information: <https://midsci.com/terms>

V.01.2024

PCR/qPCR PLATES

- Uniformed wells and ultra-thin walls provide optimal heat transfer and reaction efficiency
- Fits most thermal cyclers
- High contrast black alphanumerics for easy well identification

PR1MA™ Full-Skirted Plates



ITEM #	DESCRIPTION	QTY	PRICE
PR-PCR3196	0.1 mL x 96 Full-Skirted Low Profile PCR Plate A12 Cut	10/cs	\$24.80
PR-PCR33841	384 Full-Skirted ABI Type 1-Notch PCR Plate A24 Cut	10/cs	\$36.20
PR-PCR33842	384 Full-Skirted Roche Type 2-Notch PCR Plate A24/P24 Cut	10/cs	\$35.67



PR-PCR33841



PR-PCR3196



PR-PCR33842

Need white or colors?
Give us a call!



PR1MA™ Semi-Skirted Plates

ITEM #	DESCRIPTION	QTY	PRICE
PR-PCR2196F	0.1 mL x 96 Semi-Skirted Fast Type PCR Plate A1 Cut	10/cs	\$24.80
PR-PCR2196LC	0.1 mL x 96 Semi-Skirted LightCycler Type PCR Plate H12 Cut	10/cs	\$24.80
PR-PCR2296	0.2 mL x 96 Semi-Skirted ABI Type PCR Plate A12 Cut	10/cs	\$24.80
PR-PCR2296R	0.2 mL x 96 Semi-Skirted ABI Type Raised Rim PCR Plate A12 Cut	10/cs	\$24.80
PR-PCR2296S	0.2 mL x 96 Semi-Skirted Straight Side PCR Plate A12 Cut	10/cs	\$24.80



PR-PCR2196F



PR-PCR2196LC



PR-PCR2296



PR-PCR2296R



PR-PCR2296S

Need PCR racks, freezer racks or workstations?
Email your trusted MIDSCI™ Lab Consultant and we will get you what you need!

Certified free of detectable RNase, DNase, DNA, PCR inhibitors, and tested pyrogen-free.

ORDER TODAY!

midsci.com • custserv@midsci.com • 800.227.9997 • f: 636.225.9998

PCR/qPCR PLATES

- High-contrast, black alphanumeric for easy well identification
- Ultra thin for uniformity & high reaction efficiency
- Well ridges reduce sample evaporation



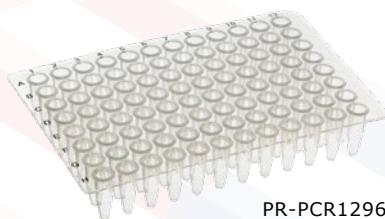
PR1MA™ Non-Skirted Plates

**Broad thermal
cycler compatibility**

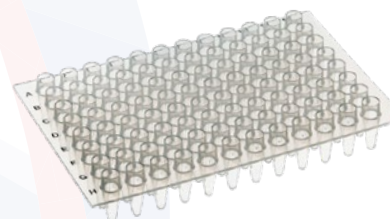
ITEM #	DESCRIPTION	QTY	PRICE
PR-PCR1196	0.1 mL x 96 Non-Skirted PCR Plate, H12 Cut	20/cs	\$49.61
PR-PCR1296	0.2 mL x 96 Non-Skirted PCR Plate, A12 Cut	10/cs	\$24.80
PR-PCR1296-CUT	0.2 mL x 96 Cuttable Non-Skirted PCR Plate, A12 Cut	10/cs	\$29.26
PR-PCR1C296	0.2 mL x 96 Non-Skirted Chimney Top PCR Plate, H12 Cut	10/cs	\$29.28



PR-PCR1196



PR-PCR1296 &
PR-PCR1296-CUT



PR-PCR1C296

**Not sure what will fit your equipment?
We have a solution for that!**

**Check out our new PR1MA™
Plates and Tubes Selection Tool**



Certified free of detectable RNase, DNase, DNA, PCR inhibitors, and tested pyrogen-free.

ThermalSeal® RTS™ & RT2™ qPCR Sealing Film



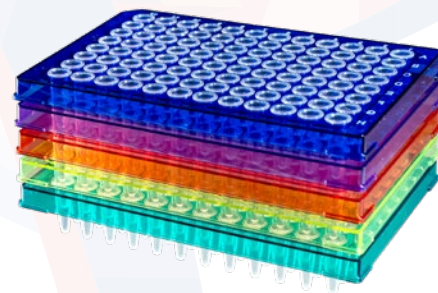
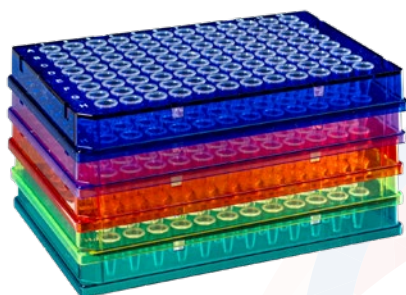
ITEM #	DESCRIPTION	QTY	PRICE
TS-RT2-100	-40°C to +120°C, Optically Transparent, Highly Conformable Adhesive, Indiv Sheets, Non-Sterile	100/bx	\$216.75
TS-RT2RR-100	-40°C to +120°C, Optically Transparent, Highly Conformable Adhesive, SM Indiv Sheets, Non-Sterile, For Raised Rim Plates	100/bx	\$216.75

PCR/qPCR PLATES

Discover the next generation of PCR plates!



- Polycarbonate frame is rigid and flat to facilitate a firm grip by robotic arms and ensure reliable placement
- Polypropylene wells provide optimal thermal transfer and higher reaction efficiency
- Reduced outer well evaporation for more consistent data across all wells
- White well options enhance the fluorescence signal during qPCR
- Wells are slightly raised to ensure evaporation-proof sealing with film, foil, or strip caps
- ANSI/SBS footprint and well spacing



New!

PR1MA™ Shell PCR Plates

PR1MA™ Shell sets a new standard in performance and convenience.

ITEM #	DESCRIPTION	QTY	PRICE
PR-PCR3742-C	0.1 mL x 96 Full-Skirt, Clear, Clear Wells	10/pk	\$56.78
PR-PCR3742-RB**	0.1 mL x 96 Full-Skirt, Assorted, Clear Wells	10/pk	\$56.78
PR-PCR3742-BL	0.1 mL x 96 Full-Skirt, Black, White Wells	10/pk	\$65.30
PR-PCR3742BC-C	0.1 mL x 96 Full-Skirt, Clear, Clear Wells, Barcoded	10/pk	\$64.48
PR-PCR3742BC-B	0.1 mL x 96 Full-Skirt, Black, White Wells, Barcoded	10/pk	\$72.99
PR-PCR3750-C	0.2 mL x 96 Semi-Skirt, Clear, Clear Wells	10/pk	\$56.78
PR-PCR3750-RB**	0.2 mL x 96 Semi-Skirt, Assorted, Clear Wells	10/pk	\$56.78
PR-PCR3735-C	384 Well Full-Skirt, Clear, A24 Cut, Clear Wells	10/pk	\$79.78
PR-PCR3735-RB**	384 Well Full-Skirt, Assorted, A24 Cut, Clear Wells	10/pk	\$79.78
PR-PCR3735-BL	384 Well Full-Skirt, Black, A24 Cut, White Wells	10/pk	\$83.77
PR-PCR3735BC-C	384 Well Full-Skirt, Clear, A24 Cut, Barcoded	10/pk	\$87.48
PR-PCR3735BC-B	384 Well Full-Skirt, Black, A24 Cut, Barcoded, White Wells	10/pk	\$91.46
PR-PCR3730-C	384 Well Full-Skirt, Clear, A24 & P24 Cut	10/pk	\$79.78
PR-PCR3730BC-C	384 Well Full-Skirt, Clear, A24 & P24 Cut, Barcoded	10/pk	\$87.48

*All plates are made with rigid polycarbonate frames and polypropylene wells
Certified free of detectable RNase, DNase, DNA, PCR inhibitors, and tested pyrogen-free.*

For colors add: -B (blue), -G (green), -O (orange), -R (red), -V (violet), -Y (yellow) to the Item #

***Assorted colors include Blue, Green, Red, Violet, and Yellow. Available with barcode. Custom barcoding is available.*

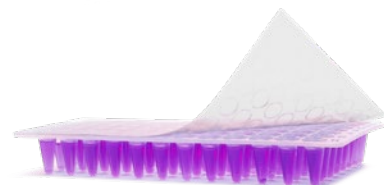
Trust MIDSCI™ for PCR consumables that deliver accurate and reproducible results, empowering you to make groundbreaking discoveries.

PCR/qPCR PLASTICS

- Application: PCR
- Temperature Range: -20°C to +120°C* and -40°C to +120°C**
- Certified DNase- & RNase- free
- Ideal for use with flat-top, semi-skirted and full-skirted PCR plates

PCR Transparent Sealing Film

ITEM #	DESCRIPTION	QTY	PRICE
XTR2-100	eXTReMe™ 2 Seal* Extra Strong Sealing Film, 2 Mil Clear Polyester, Indiv Sheets, Non-Sterile	100/bx	\$84.88
XTR2-LG-100	eXTReMe™ 2 Seal* Extra Strong Sealing Film, 2 Mil Clear Polyester, LG Indiv Sheets, Non-Sterile	100/bx	\$97.91
100-THER-PLT	ThermalSeal® Sealing Film**, Easy to Remove Film for PCR & General Storage, Indiv Sheets, Non-Sterile	100/bx	\$108.95
STR-THER-PLT	ThermalSeal® Sealing Film**, Easy to Remove Film for PCR & General Storage, Indiv Sheets, Sterile	100/bx	\$143.23
TS2-100	ThermalSeal® 2™** Soft, Extra Thick, Conformable Adhesive, Indiv Sheets, Non-Sterile	100/bx	\$119.87
TSA-100	ThermalSeal® Advanced**, Soft, Extra Thick, Conformable Adhesive, SM Indiv Sheets, Non-Sterile	100/bx	\$120.18



PR1MA™ PCR Strips with Attached Caps

ITEM #	DESCRIPTION	QTY	PRICE
PR-PCR18ACF	0.1 mL x 8 Strip PCR Tubes w/Attached Flat Cap	120/cs	\$70.84
PR-PCR18ACF-W	0.1 mL x 8 Strip PCR Tubes w/Attached Flat Cap, White	120/cs	\$74.14
PR-PCR28ACF	0.2 mL x 8 Strip PCR Tubes w/Attached Flat Cap	120/cs	\$68.86
PR-PCR28ACD	0.2 mL x 8 Easy Split PCR Strip Tubes w/Attached Domed Cap	120/cs	\$68.86
PR-PCR28ACZF	0.2 mL x 8 PCR Strip Tubes w/Attached Hinged Flat Caps	125/cs	\$71.60

Not sure what will fit your equipment?
We have a solution for that!

**Check out our new PR1MA™
 Plates and Tubes Selection Tool**



All tubes and caps on this page are certified free of detectable RNase, DNase, PCR inhibitors, & pyrogen free.

PCR/qPCR PLASTICS

- Evaporation-resistant and provide easy-to-open-and-close lids that prevent sample loss

- The uniform wells and ultra-thin walls provide optimal heat transfer and reaction efficiency

PR1MA™ PCR Strips with Caps



ITEM #	DESCRIPTION	QTY	PRICE
PR-PCR18CF	0.1 mL x 8 PCR Strip Tubes & Flat Caps	125/cs	\$76.82
PR-PCR28CF	0.2 mL x 8 PCR Strip Tubes & Flat Caps	125/cs	\$76.82
PR-PCR28CD	0.2 mL x 8 PCR Strip Tubes & Domed Caps	125/cs	\$76.82
PR-PCR212CF	0.2 mL x 12 PCR Strip Tubes & Flat Caps	80/cs	\$91.10
PR-PCR212CD	0.2 mL x 12 PCR Strip Tubes & Domed Caps	80/cs	\$91.10

Need white or colors?
Give us a call!



Strip Caps work with our
PR1MA™ PCR Plates



PR1MA™ PCR Strips & Caps

ITEM #	DESCRIPTION	QTY	PRICE
PR-PCR18	0.1 mL x 8 PCR Strip Tubes	125/cs	\$70.42
PR-PCR28	0.2 mL x 8 PCR Strip Tubes	125/cs	\$70.42
PR-PCRC8F	PCR Strip of 8 Flat Caps	125/cs	\$18.60
PR-PCRC8D	PCR Strip of 8 Domed Caps	125/cs	\$18.60
PR-PCR212	0.2 mL x 12 PCR Strip Tubes	80/cs	\$81.39
PR-PCRC12F	PCR Strip of 12 Flat Caps	80/cs	\$18.84
PR-PCRC12D	PCR Strip of 12 Domed Caps	80/cs	\$18.84

Strip and Caps Sold Separately

- Optically clear flat caps are great for qPCR
- Easy split strips are easy to break apart
- All other strips are 3 point interwell linked to increase strength and limit spillage

- White tubes enhance signal transmission and reduce background when performing qPCR
- We can match any need!
- Universal fit for cyclers



Need colors? Give us a call!

PR1MA™ Individual PCR Tubes

ITEM #	DESCRIPTION	QTY	PRICE
PR-PCR2F	0.2 mL Individual PCR Tube w/Clear Flat Cap	1,000/cs	\$38.80
PR-PCR2FF	0.2 mL Individual PCR Tube w/Frosted Flat Cap	1,000/cs	\$38.80
PR-PCR2D	0.2 mL Individual PCR Tube w/Domed Cap	1,000/cs	\$45.33

All tubes and caps on this page are certified free of detectable RNase, DNase, PCR inhibitors, & pyrogen free.



PCR/qPCR PLASTICS



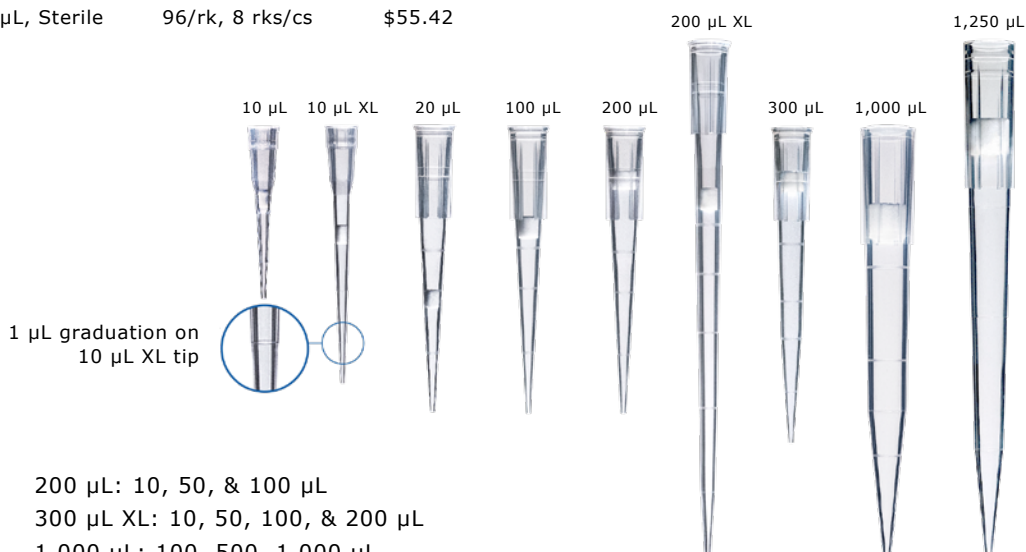
Supreme accuracy with the low-retention feature!

- Barrier tips have extra working volume, so liquid doesn't touch the filter
- Great stackable racks
- 10 μ L XL tips have 1 μ L graduations
- Clear & readable graduations
- Sterile, RNase free and DNase free

PR1MA™ Low-Retention Barrier Pipette Tips

ITEM #	DESCRIPTION	QTY	PRICE
PR-10RK-FL	10 μ L, Sterile	96/rk, 10 rks/cs	\$67.16
PR-10XLRK-FL	10 μ L XL, Sterile	96/rk, 10 rks/cs	\$66.96
PR-20RK-FL	20 μ L, Sterile	96/rk, 10 rks/cs	\$66.96
PR-100RK-FL	100 μ L, Sterile	96/rk, 10 rks/cs	\$66.96
PR-200RK-FL	200 μ L, Sterile	96/rk, 10 rks/cs	\$66.96
PR-200XLRK-FL	200 μ L XL 5 in. Long, Sterile	96/rk, 8 rks/cs	\$84.52
PR-300RK-FL	300 μ L, Sterile	96/rk, 10 rks/cs	\$66.96
PR-1000RK-FL	1,000 μ L, Sterile	96/rk, 8 rks/cs	\$58.52
PR-1250RK-FL	1,250 μ L, Sterile	96/rk, 8 rks/cs	\$55.42

Improve consistency and reproducibility with low-retention tips!



Graduations:

10 μ L: 2 & 10 μ L	200 μ L: 10, 50, & 100 μ L
10 μ L XL: 1, 2, & 10 μ L	300 μ L XL: 10, 50, 100, & 200 μ L
20 μ L: 10 μ L	1,000 μ L: 100, 500, 1,000 μ L
100 μ L: 10, 50, & 100 μ L	1,250 μ L: 100, 500, & 1,000 μ L

PCR/qPCR REAGENTS



PR1MA™ Taq

Ideal for routine PCR applications as well as genotyping, colony PCR and fast PCR

ITEM #	DESCRIPTION	QTY	PRICE
PR1000-500	Taq	500 units	\$106.71
PR1000-1000	Taq	1,000 units	\$172.11
PR1000-5000	Taq	5,000 units	\$884.59
PR1000-10000	Taq	10,000 units	\$1,465.43
PR1000-R-500	Taq Red Dye	500 units	\$141.85
PR1001-500	Taq Master Mix	500 reactions	\$227.14
PR1001-R-200	Taq Master Mix Red Dye	200 reactions	\$90.95
PR1001-R-500	Taq Master Mix Red Dye	500 reactions	\$229.14

PR1MA™ High Fidelity Taq

Ideal for cloning, mutagenesis and microarrays



ITEM #	DESCRIPTION	QTY	PRICE
PR1001-HF-500	HF Taq	500 units	\$401.29
PR1001-HF-200	HF Master Mix	200 reactions	\$180.66
PR1001-HFHS-200	HFHS Master Mix	200 reactions	\$178.19



Ideal for multiplex PCR and amplification of GC-rich DNA

PR1MA™ Hot Start Taq

ITEM #	DESCRIPTION	QTY	PRICE
PR1000-HS-500	HS Taq	500 units	\$221.86
PR1000-HS-2500	HS Taq	2,500 units	\$1,119.06
PR1000-HS-10000	HS Taq	10,000 units	\$3,650.25
PR1001-HS-200	HS Taq Master Mix	200 reactions	\$166.04

PR1MA™ dNTPs



ITEM #	DESCRIPTION	QTY	PRICE
PR3040-M-2	40 mM dNTP Mix	10 mM/5 µmol each, 1 mL	\$106.58
PR3040-M-8	40 mM dNTP Mix	10 mM/20 µmol each, 4 mL	\$373.02
PR3101-S-1	100 mM dNTP set dATP, dCTP, dGTP, dTTP	250 µL/25 µmol each	\$145.44
PR3101-S-4	100 mM dNTP set dATP, dCTP, dGTP, dTTP	1 mL/100 µmol each	\$521.28
PR3101-S-20	100 mM dNTP set dATP, dCTP, dGTP, dTTP	20 x 250 µL/25 µmol each	\$3,517.03

NEED HFHS MASTERMIX, LONG APPLICATION TAQ, A MAMMALIAN GENOTYPING KIT, OR SOMETHING ELSE?
EMAIL: TECH@MIDSCI.COM AND WE WILL GET IT!

PCR/qPCR REAGENTS

- Superior sensitivity and fast cycling with exceptional results
- Ideal for low copy number templates
- Early Ct values and detection across a broad dynamic range
- Ready to use 2x mastermix
- Includes PR1MA™ Hot Start Taq Polymerase for greater specificity and accuracy
- Inert, blue tracking dye assists with accurate pipetting
- Optimized detection system specific, no change in protocol or results but significantly more cost effective



Tell us what qPCR system you have, and we can guide you to which enzyme is made for YOUR machine!

PR1MA™ qMAX Green or Probe Mix

ITEM #	DESCRIPTION	QTY	PRICE
PR2000-H-1000	Green High ROX	1,000 reactions	\$642.51
PR2000-L-1000	Green Low ROX	1,000 reactions	\$642.51
PR2000-N-1000	Green No ROX	1,000 reactions	\$642.51
PR2001-H-1000	Probe High ROX	1,000 reactions	\$642.51
PR2001-L-1000	Probe Low ROX	1,000 reactions	\$642.51
PR2001-N-1000	Probe No ROX	1,000 reactions	\$642.51



Need 500 or 5000 reactions?
Please visit midsci.com for other quantities

cdNA Synthesis Kit is a 2-tube format for easy reaction set up and is ideal for 4 pg to 0.5 µg of input RNA. One tube includes our exceptionally stable Reverse Transcriptase combined with a potent RNase inhibitor, and the other tube contains a 5X reaction buffer with an optimal mixture of anchored oligo (dT) primers and random hexamers to produce a nonbiased population of cdNA.

1st Strand cdNA Synthesis Flex Kit includes four components: a high capacity Reverse Transcriptase, an optimized 5X buffer, and separate solutions of oligo (dT) primers, and random hexamer primers. This multi-component format is ideal for 10 pg to 2.0 µg of input RNA and allows for greater flexibility in assay design.



PR1MA™ qMAX cDNA Synthesis Kit

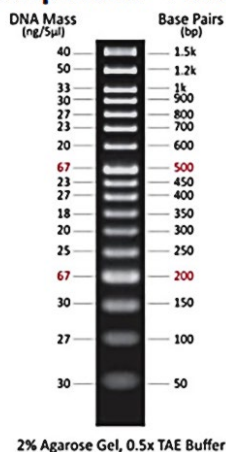
ITEM #	DESCRIPTION	QTY	PRICE
PR2100-C-S	cdNA Synthesis Sample	5 reactions	\$19.36
PR2100-C-25	cdNA Synthesis Kit	25 reactions	\$126.07
PR2100-C-100	cdNA Synthesis Kit	100 reactions	\$443.72
PR2100-C-250	cdNA Synthesis Kit	250 reactions	\$1,052.25
PR2110-S	First Strand cdNA Synthesis Flex Sample Kit	5 reactions	\$12.15
PR2110-50	First Strand cdNA Synthesis Flex Kit	50 reactions	\$107.94

Compare to IScript™, Superscript™ II/III/IV, VILO, Thermo™ First Strand - let us know what kit you use and we can give you a money saving swap!

PCR/qPCR REAGENTS

- Ready-to-use formulation includes loading buffer and tracking dye
- 500 µL suitable for 100 lanes (5 µL per lane)
- Higher intensity reference bands
- Ultra pure production allows economical ambient shipping
- 0.1 mg / mL concentration

50 bp ladder - PR4005



2% Agarose Gel, 0.5x TAE Buffer

Additional loading buffer is not required!

PR1MA™ DNA Ladders

ITEM #	DESCRIPTION	QTY	PRICE
PR4010-100	100bp DNA Ladder	500 µL/100 lanes	\$41.51
PR4010-200	100bp DNA Ladder	2 x 500 µL/200 lanes	\$106.58
PR4010-500	100bp DNA Ladder	5 x 500 µL/500 lanes	\$185.81
PR4100-200	1kb DNA Ladder	2 x 500 µL/200 lanes	\$106.58
PR4100-600	1kb DNA Ladder	6 x 500 µL/600 lanes	\$261.11
PR4005-100	50bp DNA Ladder	500 µL/100 lanes	\$54.06
PR4005-500	50bp DNA Ladder	5 x 500 µL/500 lanes	\$185.81

- Yields high resolution sharp DNA bands with high clarity and low background
- Optimized gel strength for ease of gel preparation
- High purity and multi-purpose

PR1MA™ Agarose

ITEM #	DESCRIPTION	QTY	PRICE
MIDSCI-500	General Purpose	500 grams	\$233.08



- Replaces hazardous Ethidium Bromide (EtBr)
- Better sensitivity than EtBr
- Detect as little as 0.1ng of DNA
- Excitation by UV or Blue Light



PR1MA™ SmartGlow™ DNA Safe Stain

ITEM #	DESCRIPTION	QTY	PRICE
BE4500-LD	Loading Dye, Blue & UV light	1 mL	\$134.62
BE4500-PS	Pre-Stain, Blue & UV light	1 mL	\$130.18

PCR/qPCR EQUIPMENT

Best Seller!

MultiGene™ Optimax Thermal Cycler

ITEM #	DESCRIPTION	QTY	PRICE	PROMO PRICE
TC9610	96 Sample Thermal Cycler, 115V Model	1/ea	\$4241.54	\$3,088.00

Offer valid 01/01/24 - 03/31/24. This promo cannot be combined with other promotions or discounts. All terms apply.



- Gradient capability
- Precision thermal control
- 6-segment block temperature control
- TM calculator
- 3-yr warranty



- Run multiple templates and programs at the same time!
- Dual or triple block models are available, both offering extremely fast cycling profiles
- Large touch screen interfaces
- Self-adjusting heated lids, gradient capabilities
- Easy-to-use program wizard
- 2-yr warranty

MultiCycler™ Multi-block Thermal Cycler

ITEM #	DESCRIPTION	QTY	PRICE
T3-0248G	MultiCycler™ 248, 2 x 48 x 0.2 mL Blocks	1/ea	\$8,868.90
T3-0332G	MultiCycler™ 332, 3 x 32 x 0.2 mL Blocks	1/ea	\$10,194.90

The Azure Cielo is a 96-well real-time PCR machine that features innovative and high-performance optical technology with broad application compatibility.

- Unparalleled data uniformity
- Data emailed after run completion
- Shorter run times
- Multiplex qPCR of up to six-targets

qPCR Azure Systems

ITEM #	DESCRIPTION	QTY	PRICE	PROMO PRICE
AIQ030	Cielo 3 qPCR System, 0.1 mL x 96	1/ea	\$27,850.00	
AIQ060	Cielo 6 qPCR System, 0.1 mL x 96*	1/ea	\$34,850.00	\$16,895
AIQ1000	Cielo 3 Software Plate Setup, PCR Compatible	1/ea	\$1,600.00	

SPECIAL PROMOTIONAL PRICE:

*Includes: Azure Cielo 6, software, and 18 months of warranty.
Offer valid 01/01/24 - 03/31/24



PCR/qPCR EQUIPMENT



- Molded, durable construction
- Rubber gates for easy, tapeless gel casting
- Adjustable height combs
- Loading guides aid in well visualization



Enduro Horizontal Electrophoresis System

ITEM #	DESCRIPTION	QTY	PRICE
E1007-7	Electrophoresis System 7 x 7 cm, (2) 8 Tooth Combs	1/ea	\$609.47
E1007-10	Electrophoresis System 7 x 10 cm, (3) 8 Tooth Combs	1/ea	\$634.73

- Compact and simple with a 2-year warranty
- Choose constant 100 V or 200 V output , 200 mA
- Two pairs of output terminals

Ideal for DNA & Protein Gels!!

MYVOLT™ Mini Power Supply

ITEM #	DESCRIPTION	QTY	PRICE
PS2100	Mini Power Supply	1/ea	\$212.42



- Touchscreen control
- Dual orientation, auto-rotating display
- Control voltage or amperage with intuitive programming
- 300 V, 400 mA, 100 W



PR1MA™ Touch Power Supply

ITEM #	DESCRIPTION	QTY	PRICE
PS2300	Compact Electrophoresis Power Supply	1/ea	\$566.32

PCR/qPCR EQUIPMENT



- Quickly spins down droplets in PCR plates (less than 20 seconds)
- Accepts skirted, non-skirted, standard, and most microtiter PCR plates
- 50% smaller than traditional centrifuges
- Unique rotor design prevents sample spillage
- 2-year warranty

PR1MA™ Microplate Microcentrifuge

ITEM #	DESCRIPTION	QTY	PRICE
PCRCENT	Microplate Centrifuge w/ Rotor & Plate Carriers, Capacity 2 x 2 PCR Plates or 24 x 0.2 mL PCR strips, Max Speed 2,550 rpm	1/ea	\$894.54
PCRCENT-A02	Adapter Plate for 96 x 0.2 mL Tubes or 12 PCR Strips	2/pk	\$67.26
PCRCENT-DWMP	Rotor for Deep Well Plates (Up to 35 mm Tall)	1/ea	\$231.34

- Quickly spin down droplets and condensation
- Use before and after thermal cycling to increase PCR yield
- Accepts skirted, non-skirt and all standard PCR plates
- Less than 1/4 the size of most plate centrifuges
- 1-year warranty

Mini Plate Spinner Centrifuge

ITEM #	DESCRIPTION	QTY	PRICE
C1000	Mini Plate Spinner, Capacity 2 PCR Plates, Max Speed 2,500 rpm	1/ea	\$990.47



- Unique rotor accepts 12-position PCR strips
- Digital control up to 5,500 rpm
- "Mini" sized, less than 8 inches wide
- Timer up to 99 mins.
- 2-year warranty

New!

StripSpin™ 12D Centrifuge

ITEM #	DESCRIPTION	QTY	PRICE
C2248	12-Strip PCR Tubes Centrifuge, Capacity 4 x 12 PCR Strips, Max Speed 5,500 rpm	1/ea	\$595.00

Contact us for other myFuge centrifuge models!

PCR/qPCR EQUIPMENT

- Eight position microtube rotor
- A second rotor for 0.2 mL PCR tubes and strips is also included
- Storage compartment for PCR rotor
- 2-year warranty

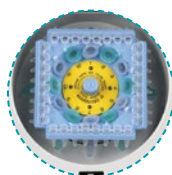
PR1MA[™] 8 Mini Centrifuge

ITEM #	DESCRIPTION	QTY	PRICE
MF8-R	8 Mini, Blue, 8 x 1.5/2.0 mL or 32 x 0.2 mL Tubes or 4 x PCR, Max Speed 6,000 rpm	1/ea	\$346.90
MF8-B	8 Mini, Clear, 8 x 1.5/2.0 mL or 32 x 0.2 mL Tubes or 4 x PCR, Max Speed 6,000 rpm	1/ea	\$346.90
MF8-G	8 Mini, Green, 8 x 1.5/2.0 mL or 32 x 0.2 mL Tubes or 4 x PCR, Max Speed 6,000 rpm	1/ea	\$346.90
MF8-P	8 Mini, Purple, 8 x 1.5/2.0 mL or 32 x 0.2 mL Tubes or 4 x PCR, Max Speed 6,000 rpm	1/ea	\$346.90
MF8-C	8 Mini, Red, 8 x 1.5/2.0 mL or 32 x 0.2 mL Tubes or 4 x PCR, Max Speed 6,000 rpm	1/ea	\$346.90

Includes both microtube and PCR strip rotors



Storage compartment for PCR strip rotor



COMBI-Rotor[™]
accepts tubes and strips!

PR1MA[™] 12 Mini Microcentrifuge

ITEM #	DESCRIPTION	QTY	PRICE
MF12	12 Mini, Capacity 12 x 1.5 mL Tubes, Max Speed 5,500 rpm	1/ea	\$457.47

New!

MC-24R Refrigerated Microcentrifuge

ITEM #	DESCRIPTION	QTY	PRICE
C2417-R	High Speed Refrigerated Microcentrifuge, 120V, 24 x 1.5/2.0 mL, Max Speed 13,500 rpm	1/ea	\$5,395.00
C2417-R-C	High Speed Refrigerated Microcentrifuge w/ COMBI-rotor [™] , 24 x 1.5/2.0 mL, Max Speed 13,500 rpm	1/ea	\$5,695.99

- C2417-R-C includes COMBI-Rotor[™] accepts tubes and strips (lid included)
- Powerful refrigeration, as low as -20°C
- Touch operation

- Up to 16,800 xg!
- Status indicator light
- 2-year warranty



PCR/qPCR EQUIPMENT

AlphaPette™ by PR1MA™ Single-Channel Pipettors

ITEM #	DESCRIPTION	QTY	PRICE
A-2	0.1 to 2 µL	1/ea	\$273.08
A-10	0.5 to 10 µL	1/ea	\$273.08
A-20	2 to 20 µL	1/ea	\$273.08
A-100	10 to 100 µL	1/ea	\$273.08
A-200	20 to 200 µL	1/ea	\$273.08
A-1000	100 to 1,000 µL	1/ea	\$273.08
A-5000	1,000 to 5,000 µL	1/ea	\$273.08

- Universal shaft will accept most pipette tips
- Lifetime warranty (*except calibration and abuse*)
- Lower ejection force
- Autoclavable
- Distinguishing color sets it apart for dedicated use



Introducing AlphaPette™ by PR1MA™! Same great product, just a new name!

- Universal shaft will accept most pipette tips
- 3-year warranty
- Lower ejection force



Alphapette™ PR1MA™ Multi-Channel Pipettors

ITEM #	DESCRIPTION	QTY	PRICE
AP4508-10	8-Channel, 1 to 10 µL	1/ea	\$710.01
AP4508-50	8-Channel, 5 to 50 µL	1/ea	\$710.01
AP4508-200	8-Channel, 20 to 200 µL	1/ea	\$710.01
AP4508-300	8-Channel, 50 to 300 µL	1/ea	\$710.01
AP4512-10	12-Channel, 1 to 10 µL	1/ea	\$864.95
AP4512-50	12-Channel, 5 to 50 µL	1/ea	\$864.95
AP4512-200	12-Channel, 20 to 200 µL	1/ea	\$864.95
AP4512-300	12-Channel, 50 to 300 µL	1/ea	\$864.95

- Microvolume analysis of DNA, RNA and proteins
- Quick and accurate results from a sample droplet
- Touch screen control panel, no PC or software required

- Built-in printer and cuvette port for OD600 readings
- XF model includes fluorometer for sensitive DNA quantification

SmartDrop™ Nano Spectrophotometers

ITEM #	DESCRIPTION	QTY	PRICE
NS1000	L Spectrophotometer, 115V	1/ea	\$6,090.00
NS1010	X UV-Vis Spectrophotometer, 115V	1/ea	\$11,539.50
NS1020	XF UV-Vis Spectrophotometer & Fluorometer, 115 V	1/ea	\$13,639.50



PCR/qPCR EQUIPMENT



- Powerful vortexing for tubes up to 50 mL
- "Mini sized", less than 4 inches wide
- Pressure activated operation
- 2,800 rpm
- 2-year warranty

PR1MA™ Mini Vortexer

ITEM #	DESCRIPTION	QTY	PRICE
VM1-B	Mini Vortexer, Blue, 4 mm Orbit, Max Speed 2,800 rpm	1/ea	\$229.09
VM1-G	Mini Vortexer, Green, 4 mm Orbit, Max Speed 2,800 rpm	1/ea	\$229.09
VM1-GR	Mini Vortexer, Gray, 4 mm Orbit, Max Speed 2,800 rpm	1/ea	\$229.09
VM1-P	Mini Vortexer, Purple, 4 mm Orbit, Max Speed 2,800 rpm	1/ea	\$229.09
VM1-R	Mini Vortexer, Red, 4 mm Orbit, Max Speed 2,800 rpm	1/ea	\$229.09

- Powerful motor for INSTANT vortexing
- Wide variety of accessories
- Continuous or "touch" operation
- 2-year warranty
- Q-Drive™ dynamic balancing system

PR1MA™ Vortex Mixers

ITEM #	DESCRIPTION	QTY	PRICE
VM-3200	Adjustable Vortex Mixer, 3 mm Orbit, Max Speed 3,200 rpm	1/ea	\$296.62
VM-COMBO	Combo Head Attachment, 1.5 mL, 0.5 mL Microtubes & 1 Microplate	1/ea	\$78.69
VM-FLAT	Flat Head Attachment, 3 in.	1/ea	\$43.88
VM-H15	Horizontal Head, 12 x 1.5 mL Microtubes	1/ea	\$111.76
VM-H150	Horizontal Head, 4 x 15 mL Microtubes	1/ea	\$111.76
VM-H500	Horizontal Head, 2 x 50 mL Microtubes	1/ea	\$111.76



- Blocks available from 96 x 0.2 mL to 6 x 50 mL, custom, or multi-purpose
- Heating rate 5°C/min - Cooling rate 2.5°C/min
- Speed 200 to 1,500 rpm
- 2-year warranty



Multi-Therm™ Incubated Vortexer

ITEM #	DESCRIPTION	QTY	PRICE
MTH-1500	Temp Controlled Vortexer Ambient +5°C to 100°C	1/ea	\$2,425.66
MTHC-1500	Temp Controlled Vortexer Ambient -20°C to 100°C	1/ea	\$3,186.99
MTB-500	Block, 50 mL x 6 Tubes*	1/ea	\$494.19
MTB-5MT	Block, 5 mL x 15 conical Tubes*	1/ea	\$494.19
MTB-02	Block, 0.2 mL x 96 Tubes or 1 PCR Plate*	1/ea	\$416.84
MTB-05	Block, 0.5 mL x 54 Tubes*	1/ea	\$350.82
MTB-15	Block, 1.5 mL x 35 Tubes*	1/ea	\$350.82

*Blocks sold separately

Additional Blocks Available - visit www.midsci.com for more options!

PCR/qPCR EQUIPMENT

- Non-skid rubber feet provide a stable platform for loading samples
- Gets cold in as few as 25 minutes
- Samples stay cold on your benchtop for up to an hour



PR1MA™ Aluminum Tube Racks

ITEM #	DESCRIPTION	QTY	PRICE
RACK-CRYO	15 x Cryo Tubes, for Cryo Tubes, Silver	1/pk	\$88.48
RACK-96	96 x 0.2 mL, for PCR, Silver	1/pk	\$81.37
RACK-96-RB	96 x 0.2 mL, for PCR, Assorted	5/pk	\$339.80
RACK-384	384-Plates, for PCR, Silver	1/pk	\$113.20
RACK-15	15 x 1/5/2.0 mL, for Microcentrifuge Tubes, Silver	1/pk	\$88.48
RACK-5	24 x 0.5 mL, for Microcentrifuge Tubes, Silver	1/pk	\$88.48

- Two sides, ideal for:
 - 1.5 & 2.0 mL microtubes
 - 0.2 mL PCR tubes & strips
 - 96 well PCR plates

- Maintains 0°C for up to 4 hours
- Also for use as a PCR workstation

PR1MA™ CoolCube™

ITEM #	DESCRIPTION	QTY	PRICE
CC-FRZ	Microtube and PCR Plate Cooler Rack	1/ea	\$148.73



Need a cooling block for larger tubes? Let us know!

- Maintains 2°C to 4°C for up to 5 hours
- Keeps samples cool, but not frozen

- Accommodates several different vessel types: Vials, Tubes, Strips, Plates & Reservoirs



CoolCaddy™ PCR Work Station

ITEM #	DESCRIPTION	QTY	PRICE
FRZ-PCR	Cold Station for PCR Plate, Tubes and Cryo Vials	1/ea	\$148.73

PCR/qPCR EQUIPMENT

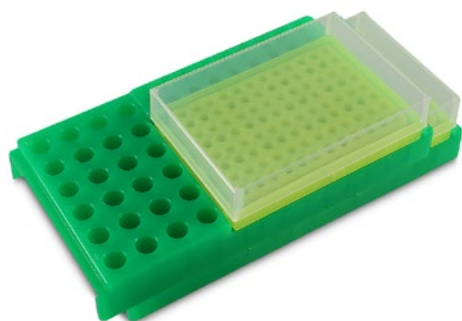
- Working storage rack for PCR processing
- Standard spacing for strip tubes or plates
- Holds 0.2 mL PCR tubes, strip tubes, and plates (does not fit full skirted plates)
- Lid included

96-Well PCR Specialty Racks



ITEM #	DESCRIPTION	QTY	PRICE
WR-96A	96-Well PCR Rack, w/ Lid, Fluorescent Assorted	5/pk	\$39.27
WR-96B	96-Well PCR Rack, w/ Lid, Fluorescent Blue	5/pk	\$38.44
WR-96G	96-Well PCR Rack, w/ Lid, Fluorescent Green	5/pk	\$38.44
WR-96O	96-Well PCR Rack, w/ Lid, Fluorescent Orange	5/pk	\$38.44
WR-96P	96-Well PCR Rack, w/ Lid, Fluorescent Pink	5/pk	\$38.44
WR-96Y	96-Well PCR Rack, w/ Lid, Fluorescent Yellow	5/pk	\$38.44

- Ideal platform to satisfy all pre- or post-PCR sampling applications
- Molded alphanumeric indexing for fast and accurate identification
- Removable 96-Place WorkUp Rack holds standard plate tubes or strip tubes
- Workstation holds all commonly used tube sizes:
 - 32 x 0.2 mL tubes
 - 24 x 1.5 or 2.0 mL tubes
 - 16 x 0.5 mL tubes



PCR Stackable Rack

ITEM #	DESCRIPTION	QTY	PRICE
WRI-4A	PCR Work-up Rack & Workstation Assembly w/ Lid, Fluorescent Assorted Colors	5/pk	\$126.81
WR-4A	96-Well PCR Rack, w/ Lid, Fluorescent Blue	5/pk	\$94.44

- Collapsible body saves valuable storage space
- Useable with crushed or dry ice
- Molded grip on base for pouring
- Inner-lid access port for enhanced temperature retention
- Attached handle for easy transportation

BioBucket™ Collapsible Ice Bucket

ITEM #	DESCRIPTION	QTY	PRICE
MID8300	5 Liter Collapsible Laboratory Bucket	1/ea	\$54.00



LIQUID HANDLING

Experience excellent pipetting with LTS-style tips from **PR1MA**™

These tips deliver superior accuracy and precision, ensuring reliable and consistent results. We are proud to manufacture our products in the USA and are committed to sustainability.

Our racks and boxes are made from our exclusive post-consumer resin, while the tips and lids are made from 100% virgin polypropylene for optimum clarity and purity.

These tips are the perfect fit for use with Rainin® LiteTouch® pipettors and are compatible with both single- and multi-channel LiteTouch® pipettors.

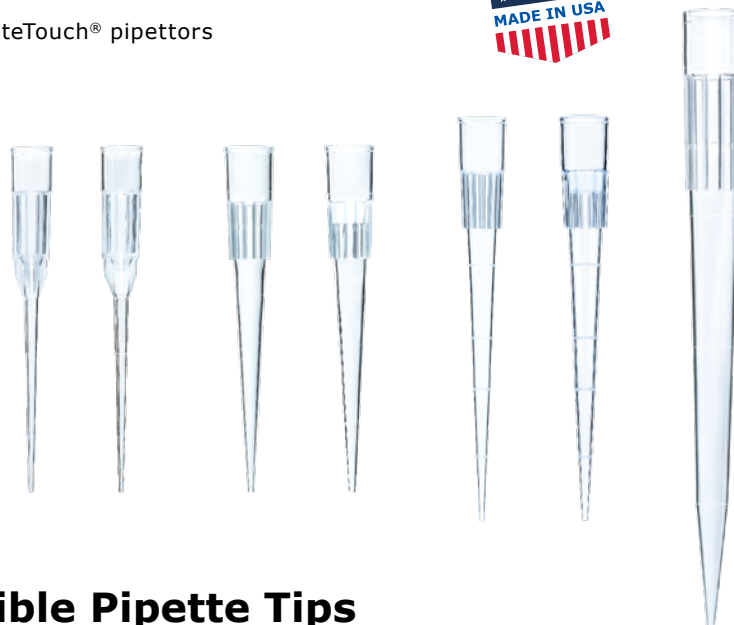


Upgrade your pipetting experience with **PR1MA™
LTS-Style Tips, which feature ultralow ejection
force for comfortable, ergonomic pipetting.**

Rainin, LiteTouch and LTS are registered trademarks of Mettler-Toledo Rainin, LLC.

LIQUID HANDLING

- Compatible with Rainin® single- and multi-channel LiteTouch® pipettors
- Light force required to add or eject tips
- Available in racked, sterile, filtered sterile, and reload varieties
- Tips are made from medical-grade virgin polypropylene
- Racks and grids are made from our exclusive 99% post-consumer recycled polypropylene and 1% colorant, representing 50% reduction in the use of virgin polypropylene!
- Proprietary resin technology facilitates clean release



New!

PR1MA[™] LTS[®] Compatible Pipette Tips

ITEM #	DESCRIPTION	QTY	PRICE
PR-LTS20RFL	20 µL LTS-Style Tips, Reloads	96/pk, 10pks/cs	\$31.56
PR-LTS20RFL-S	20 µL LTS-Style Tips, Reloads, Presterile	96/pk, 10pks/cs	\$31.56
PR-LTS20RK-NS	20 µL LTS-Style Tips, Racked	96/pk, 10pks/cs	\$41.36
PR-LTS20RK-S	20 µL LTS-Style Tips, Racked, Sterile	96/pk, 10pks/cs	\$47.25
PR-LTS20RK-FL	20 µL LTS-Style Filter Tips, Racked, Sterile	96/pk, 10pks/cs	\$75.87
PR-LTS200RFL	200 µL LTS-Style Tips, Reloads	96/pk, 10pks/cs	\$30.12
PR-LTS200RFL-S	200 µL LTS-Style Tips, Reloads, Presterile	96/pk, 10pks/cs	\$30.12
PR-LTS200RK-NS	200 µL LTS-Style Tips, Racked	96/pk, 10pks/cs	\$43.73
PR-LTS200RK-S	200 µL LTS-Style Tips, Racked, Sterile	96/pk, 10pks/cs	\$49.57
PR-LTS200RK-FL	200 µL LTS-Style Filter Tips, Racked, Sterile	96/pk, 10pks/cs	\$75.87
PR-LTS300RFL	300 µL LTS-Style Tips, Reloads	96/pk, 10pks/cs	\$31.56
PR-LTS300RFL-S	300 µL LTS-Style Tips, Reloads, Presterile	96/pk, 10pks/cs	\$31.56
PR-LTS300RK-NS	300 µL LTS-Style Tips, Racked	96/pk, 10pks/cs	\$43.73
PR-LTS300RK-S	300 µL LTS-Style Tips, Racked, Sterile	96/pk, 10pks/cs	\$49.57
PR-LTS300RK-FL	300 µL LTS-Style Filter Tips, Racked, Sterile	96/pk, 10pks/cs	\$75.87
PR-LTS1000RFL	1000 µL XL LTS-Style Tips, Reloads	96/pk, 8pks/cs	\$41.48
PR-LTS1000RFL-S	1000 µL XL LTS-Style Tips, Reloads, Presterile	96/pk, 8pks/cs	\$41.48
PR-LTS1000RK-NS	1000 µL XL LTS-Style Tips, Racked	96/pk, 10pks/cs	\$60.96
PR-LTS1000RK-S	1000 µL XL LTS-Style Tips, Racked, Sterile	96/pk, 10pks/cs	\$65.52
PR-LTS1000RK-FL	1000 µL XL LTS-Style Filter Tips, Racked, Sterile	96/pk, 10pks/cs	\$78.48
PR-SMLBXLTS	Empty LTS Rack 20uL, 200uL LTS Reloads	1/ea	\$2.80
PR-MDBXLTS	Empty LTS Rack 300uL LTS Reloads	1/ea	\$2.80
PR-LGBXLTS	Empty LTS Rack 1000XL LTS Reloads	1/ea	\$3.10

Certified free of detectable RNase, DNase, DNA, PCR inhibitors, and tested pyrogen-free

Rainin, LTS and LiteTouch are registered trademarks of Mettler-Toledo Rainin, LLC.

LIQUID HANDLING



PR1MA™ Pipette Tip Reloads

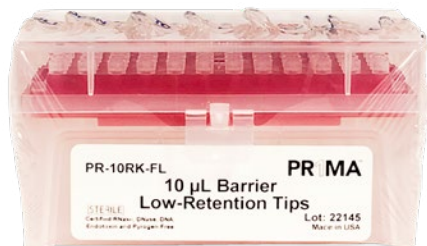
ITEM #	DESCRIPTION	QTY	PRICE
PR-10RFL	10 µL, Non-Sterile	96/rk, 10 rks/cs	\$27.85
PR-10XLRFL	10 µL XL, Non-Sterile	96/rk, 10 rks/cs	\$27.85
PR-200RFL	200 µL, Non-Sterile	96/rk, 10 rks/cs	\$26.59
PR-300RFL	300 µL, Non-Sterile	96/rk, 10 rks/cs	\$29.58
PR-1250RFL	1250 µL, Non-Sterile	96/rk, 8 rks/cs	\$36.61

Racks only, no boxes included

PR1MA™ Non-Sterile Racked Pipette Tips



ITEM #	DESCRIPTION	QTY	PRICE
PR-10RK-NS	10 µL, Non-Sterile	96/rk, 10 rks/cs	\$36.51
PR-10XLRK-NS	10 µL XL, Non-Sterile	96/rk, 10 rks/cs	\$36.51
PR-200RK-NS	200 µL, Non-Sterile	96/rk, 10 rks/cs	\$38.60
PR-200XLRK-NS	200 µL XL 5 in. Long, Non-Sterile	96/rk, 8 rks/cs	\$55.27
PR-300RK-NS	300 µL, Non-Sterile	96/rk, 10 rks/cs	\$48.29
PR-1000RK-NS	1000 µL, Non-Sterile	96/rk, 8 rks/cs	\$48.55
PR-1250RK-NS	1250 µL, Non-Sterile	96/rk, 8 rks/cs	\$43.04



PR1MA™ Sterile Racked Pipette Tips

ITEM #	DESCRIPTION	QTY	PRICE
PR-10RK-S	10 µL, Sterile	96/rk, 10 rks/cs	\$41.70
PR-10XLRK-S	10 µL XL, Sterile	96/rk, 10 rks/cs	\$41.70
PR-200RK-S	200 µL, Sterile	96/rk, 10 rks/cs	\$43.75
PR-200XLRK-S	200 µL XL 5 in. Long, Sterile	96/rk, 8 rks/cs	\$61.29
PR-300RK-S	300 µL, Sterile	96/rk, 10 rks/cs	\$53.82
PR-1000RK-S	1000 µL, Sterile	96/rk, 8 rks/cs	\$54.13
PR-1250RK-S	1250 µL, Sterile	96/rk, 8 rks/cs	\$46.27

Certified free of detectable RNase, DNase, DNA, PCR inhibitors and tested pyrogen-free. Sterile product is certified pyrogen-free.

TUBES



PR1MA™ Premium Microcentrifuge Tubes

ITEM #	DESCRIPTION	QTY	PRICE
PR-MCT6	0.5 mL, Snap Cap, Boil Proof, Clear, Non-Sterile	1,000/pk	\$32.59
PR-MCT6-LR	0.5 mL, Low-Retention, Snap Cap, Boil Proof, Clear, Non-Sterile	500/pk	\$24.13
PR-MCT6-S	0.5 mL, Snap Cap, Boil Proof, Clear, Sterile	500/pk	\$25.11
PR-MCT15	1.5 mL, Snap Cap, Boil Proof, Clear, Non-Sterile	500/pk	\$19.32
PR-MCT15-LR	1.5 mL, Low-Retention, Snap Cap, Boil Proof, Clear, Non-Sterile	250/pk	\$13.78
PR-MCT15-S	1.5 mL, Snap Cap, Boil Proof, Clear, Sterile	250/pk	\$14.51
PR-MCT17	1.5 mL, Large Snap Cap, Boil Resist, Clear, Non-Sterile	500/pk	\$19.32
PR-MCT2	2 mL, Snap Cap, Boil Proof, Clear, Non-Sterile	500/pk	\$21.84
PR-MCT2-LR	2 mL, Low-Retention, Snap Cap, Boil Proof, Clear, Non-Sterile	250/pk	\$17.48
PR-MCT2-S	2 mL, Snap Cap, Boil Proof, Clear, Sterile	250/pk	\$14.71

For colors add:

-B (blue), -G (green), -O (orange), -R (red), -P (purple), -Y (yellow), -RB (assorted), or -RBF (assorted neon) to the Item #
Sterile available for clear tubes only. Low-retention available for clear, non-sterile tubes only.

**LARGE CAP: BOIL-RESISTANT,
EASY TO OPEN AND CLOSE, AND
A LARGE LABELING SURFACE**

**SMALL CAP: BOIL-PROOF,
IDEAL FOR RIGOROUS
HIGH-TEMP APPLICATIONS**

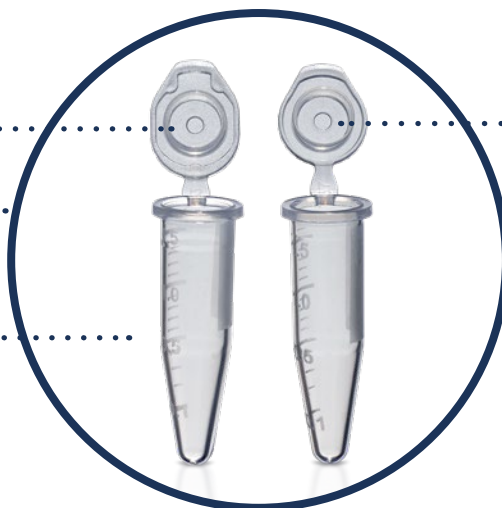
**OPTICAL CLARITY ENSURES
MAXIMUM SAMPLE VISIBILITY**

RATED TO 20,000 XG

AUTOCLAVABLE

GRADUATIONS EVERY 100 µL

**LARGE WRITING
SURFACE ON CAP TOP**



Lots more to choose from on our website!

Certified free of detectable RNase, DNase, DNA, PCR inhibitors and tested pyrogen-free.
Sterile product is certified pyrogen-free.

TUBES



- Outstanding for high centrifugation or ultra low freezing
- Liquid & temp resistant label on screw cap
- Leak proof
- White graduations down to 0.1 mL & 0.5 mL respectively
- Specs: -190°C to 100°C & 15,500 xg [PP], Sterile
-30°C to +70°C & 1,700 xg [PS], Sterile

TPP® Centrifuge Tubes



ITEM #	DESCRIPTION	QTY	PRICE
TP91016	13 mL, Round (17 x 105 mm) [PP], Sterile	40/pk, 20 pks/cs	\$748.22
TP91019	13 mL, Flat (17 x 100 mm) [PP], Sterile	40/pk, 20 pks/cs	\$748.87
TP91017	15 mL, Round (17 x 120 mm) [PP], Sterile	40/pk, 20 pks/cs	\$779.16
TP91015	15 mL, Conical, [PP], Sterile	40/pk, 20 pks/cs	\$653.83
TP91115	15 mL, Conical, [PS], Sterile	40/pk, 20 pks/cs	\$827.31
TP91050	50 mL, Conical, [PP], Sterile	20/pk, 18 pks/cs	\$351.23
TP91051	50 mL, Skirted Conical, [PP], Sterile	20/pk, 16 pks/cs	\$339.49
TP91056	50 mL, Round, [PP], Sterile	20/pk, 18 pks/cs	\$229.36

- DNase/RNase and pyrogen-FREE
- White shaded writing area

- Black graduations
- Temp Range: -80°C - 120°C

PR1MA™ Conical Centrifuge Tubes

ITEM #	DESCRIPTION	QTY	PRICE
C15B	15 mL [PP], Screw Cap, Bagged, Sterile	500/cs	\$155.82
C15R	15 mL [PP], Screw Cap, Racked, Sterile	500/cs	\$142.62
C50B	50 mL [PP], Screw Cap, Bagged, Sterile	500/cs	\$183.52
C50R	50 mL [PP], Screw Cap, Racked, Sterile	500/cs	\$176.27

The 15 mL tubes can withstand up to 12,000 (RCF) g, and the 50 mL can withstand up to 16,000 (RCF) g.

**Tornado is changing to
PR1MA™!**
Same great
product, with new
name!



- Fits most 50 mL rotors - Rim eliminates need for adapter
- Printed graduations - From 5 mL to 2 mL
- Compact low-profile design - Minimizes shipping, storage and waste
- Gamma sterilized - RNase, DNase, & Pyrogen free

25 mL Centrifuge Tubes

ITEM #	DESCRIPTION	QTY	PRICE
C2625-B	25 mL (29 x 77 mm) [PP], Screw Cap, Sterile, Bagged	25/pk, 8 pks/cs	\$101.22
C2625-R	25 mL (29 x 77 mm) [PP], Screw Cap, Sterile, Racked	25/pk, 8 pks/cs	\$104.65

24 ORDER TODAY!

midsci.com • custserv@midsci.com • 800.227.9997 • f: 636.225.9998

TUBES



- Unique cap & vial design eliminates silicone gasket pops
- Self standing
- Externally threaded for reduced contamination
- Color coded cap inserts available

TPP® CryoTubes

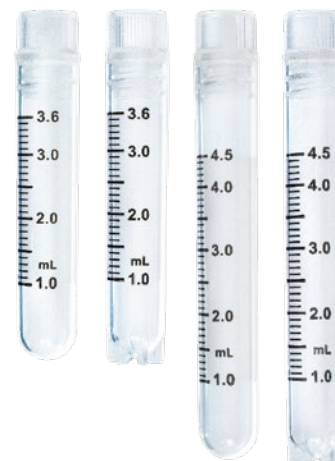
ITEM #	DESCRIPTION	QTY	PRICE
TP89012-100	1.2 mL [PP], External Thread, Self Standing, Natural, Sterile	100/pk	\$82.49
TP89020-100	2 mL [PP], External Thread, Self Standing, Natural, Sterile	100/pk	\$84.77
TP89050-100	4.5 mL [PP], External Thread, Self Standing, Natural, Sterile	100/pk	\$105.14
TP99020	Cap Inserts, Six Assorted Colors	600/cs	\$91.21

- Manufactured from high-clarity, ultra-pure polypropylene (meets FDA 21 CFR 177.1520 & USP Class VI)
- Tubes comply with the In Vitro Devices Directive (IVD)
- Contrasting black 100 µL graduations are bold and easy to read
- Large white writing area on all tubes
- Optimized for vapor-phase liquid nitrogen storage
- Available with round base or self-standing Star base
- Resealable Packaging - Tubes are packaged in resealable stand-up pouches that minimize contamination and provide easy access

New!

PR1MA™ Cryogenic Tubes

ITEM #	DESCRIPTION	QTY	PRICE
PR-CVET10-SB	1.0 mL, Cryo Tubes, Ext. Thread, Star Base, Sterile, Clear	100/pk	\$26.57
PR-CVET18-RB	1.8 mL, Cryo Tubes, Ext. Thread, Round Base, Sterile, Clear	100/pk	\$27.16
PR-CVET18-SB	1.8 mL, Cryo Tubes, Ext. Thread, Star Base, Sterile, Clear	100/pk	\$27.16
PR-CVET45-SB	4.5 mL, Cryo Tubes, Ext. Thread, Star Base, Sterile, Clear	100/pk	\$30.20
PR-CVIT10-SB	1.0 mL, Cryo Tubes, Int. Thread, Star Base, Sterile, Clear	100/pk	\$30.20
PR-CVIT18-RB	1.8 mL, Cryo Tubes, Int. Thread, Round Base, Sterile, Clear	100/pk	\$30.20
PR-CVIT18-SB	1.8 mL, Cryo Tubes, Int. Thread, Star Base, Sterile, Clear	100/pk	\$35.13
PR-CVIT36-RB	3.6 mL, Cryo Tubes, Int. Thread, Round Base, Sterile, Clear	100/pk	\$39.62
PR-CVIT36-SB	3.6 mL, Cryo Tubes, Int. Thread, Star Base, Sterile, Clear	100/pk	\$39.62
PR-CVIT45-RB	4.5 mL, Cryo Tubes, Int. Thread, Round Base, Sterile, Clear	100/pk	\$40.52
PR-CVIT45-SB	4.5 mL, Cryo Tubes, Int. Thread, Star Base, Sterile, Clear	100/pk	\$40.52
PR-CVCI	Cap Inserts Cryo Tubes, Assorted	500/pk	\$31.19



Note: not suitable for immersion in liquid nitrogen

COLD STORAGE

Same great Product,
Just a New Name!



- Used for upright freezer or chest freezer racks
- Temperature range: -196°C to +121°C
- Drain holes on bottom and writing area on lid
- Standard 5.25 x 5.25 x 2 inch
- Available cell dividers: 144, 100, 81, 64, 49, 36, 25, or 16

PR1MA™ Cardboard Freezer Boxes

ITEM #	DESCRIPTION	QTY	PRICE
SB2CC-81	Standard White Cardboard 5.25 x 5.25 x 2 in. Box w/ 81 Dividers	1/pk	\$5.00
SB2CC-100	Standard White Cardboard 5.25 x 5.25 x 2 in. Box w/ 100 Dividers	1/pk	\$5.00

Need other options?
Just let your trusted MIDSCI™ Lab Consultant know what you need.

- Stores tubes up to 2.0 mL
- Suitable for temperatures as low as -90°C
- Rugged polypropylene
- High-contrast alphanumeric indexing on lid

Polypropylene Freezer Boxes

ITEM #	DESCRIPTION	QTY	PRICE
FB-81	81-Well 5.25 x 5.25 x 2 in. [PP], w/ Lift-Off Lid, Clear	5/pk	\$36.91
FB-81C	81-Well 5.25 x 5.25 x 2 in. [PP], w/ Lift-Off Lid, Assrt	5/pk	\$40.05



- Fit all the most popular cryo and cold storage vials
- Fit into standard freezer racks
- Temperature range: -196°C to 121°C
- Drain holes for venting and safety



Polycarbonate Freezer Box

ITEM #	DESCRIPTION	QTY	PRICE
MPB2-25	25-Well, 3 x 3 x 2.0625 in. [PC], White	1/ea	\$8.35
PB2-81	81-Well, 5.25 x 5.25 x 2 in. [PC], White	1/ea	\$10.99
PB4-81	81-Well, 5.25 x 5.25 x 3.25 in. [PC], White	1/ea	\$13.29
PB2-100	100-Well, 5.25 x 5.25 x 2 in. [PC], White	1/ea	\$10.99

Have you seen our
Freezer rack Configurator?
Scan the code to check it out!



COLD STORAGE



- Cycle defrost
- Microprocessor temperature controller
- Password-protected control panel
- Touch screen digital temperature display and alarm module with battery back-up to support temperature monitoring and alarms

Templog Premier Solid Door Lab Refrigerators

ITEM #	DESCRIPTION	PRICE
ABT-HC-12S-TS	12 CuFt, 1°C to 10°C, 29.75 in x 25 in x 65.75 in	Contact for Quote
ABT-HC-16S-TS	16 CuFt, 1°C to 10°C, 29.75 in x 25 in x 79 in	Contact for Quote
ABT-HC-23S-TS	23 CuFt, 1°C to 10°C, 34.75 in x 26.875 in x 81.75 in	Contact for Quote
ABT-HC-26S-TS	26 CuFt, 1°C to 10°C, 36.50 in x 28.375 in x 78.25 in	Contact for Quote
ABT-HC-36S-TS	36 Cu Ft, 1°C to 10°C, 34.75 in x 39.625 in x 81.75 in	Contact for Quote

- Microprocessor temperature controller
- Cycle defrost
- Touch screen digital temperature display and alarm module
- Password-protected control panel

Templog Premier Glass Door Lab Refrigerator

ITEM #	DESCRIPTION	PRICE
ABT-HC-LP-12-TS	12 CuFt, 1°C to 10°C, 29.75 in x 25 in x 62.25 in	Contact for Quote
ABT-HC-LP-16-TS	16 CuFt, 1°C to 10°C, 29.75 in x 25 in x 79 in	Contact for Quote
ABT-HC-LP-23-TS	23 CuFt, 1°C to 10°C, 34.75 in x 26.875 in x 81.75 in	Contact for Quote
ABT-HC-LP-26-TS	26 CuFt, 1°C to 10°C, 36.50 in x 28.375 in x 78.25 in	Contact for Quote
ABT-HC-LP-33-TS	33 CuFt, 1°C to 10°C, 33.25 in x 39.625 in x 81.75 in	Contact for Quote
ABT-HC-LP-36-TS	36 CuFt, 1°C to 10°C, 34.75 in x 39.625 in x 81.75 in	Contact for Quote
ABT-HC-LP-47-TS	47 CuFt, 1°C to 10°C, 33.25 in x 54.125 in x 81.75 in	Contact for Quote



- 2 Probes; 1 in air and 1 in glycol bottle
- Six fixed shelves
- Keyed door lock
- Magnetic door gasket for positive seal
- Includes monitoring system

-20°C Lab Freezers Standard Manual Defrost

ITEM #	DESCRIPTION	PRICE
ABT-HC-MFP-14	14 CuFt, -15°C to -25°C, w/ Natural Refrigerants	Contact for Quote
ABT-HC-MFP-17	17 CuFt, -15°C to -25°C, w/ Natural Refrigerants	Contact for Quote
ABT-HC-MFP-20	20 CuFt, -15°C to -25°C, w/ Natural Refrigerants	Contact for Quote

Don't see what you need? Call us, we have many more options available for you!

COLD STORAGE

- Microprocessor-controlled system designed for controllable range of -40°C to -86°C for cabinet space with 1°C increment
- Large LED display for cabinet temperature, set temperature, ambient temperature, and input voltage
- Automatic clean-filter alarm and sensor error alert

Haier -86°C ULT Freezers

ITEM #	DESCRIPTION	PRICE
DW-86L338J	11.9 CuFt, -40°C to -86°C, Upright, 115 V 60 HZ	Contact for Quote
DW-86L578J	20.4 CuFt, -40°C to -86°C, Upright, 115 V 60 HZ	Contact for Quote
DW-86L728J	25.7 CuFt, -40°C to -86°C, Upright, 115 V 60 HZ	Contact for Quote
DW-86L828JA	29.2 CuFt, -40°C to -86°C, Upright, 220 V 60 HZ	Contact for Quote

Energy Star® Certified



- Advanced innovative design delivers excellent energy savings
- Optional barcode scanner for simple, effortless and precise identification
- Standard equipped with key lock, padlock and electromagnetic lock with optional fingerprint lock, providing multiple safeguards for sample safety

Haier -80°C Smart Frequency ULT Freezers

ITEM #	DESCRIPTION	PRICE
DW-86L579BPT	20.5 CuFt, -86°C, Upright, 110-230V/60Hz	Contact for Quote
DW-86L729BPT	26 CuFt, -86°C, Upright, 110-230V/60Hz	Contact for Quote
DW-86L829BPT	29 CuFt, -86°C, Upright, 208-230V/60Hz	Contact for Quote

Energy Star® Certified

- No need to worry about midnight alarms and moving samples. Each compressor can run at -80°C independently and indefinitely. If one fails, an alarm is triggered, but samples are safe and there's no need to rush.
- High speed refrigeration system for faster pull down and temperature recovery after door opening
- World leading energy saving refrigeration technology
- Smart full-size touchscreen and wireless monitoring connectivity

Haier -86°C TwinCool ULT Freezers

ITEM #	DESCRIPTION	PRICE
DW-86L578SAT	20.4 CuFt, -40°C to -86°C, Upright, 220 V 60 HZ	Contact for Quote
DW-86L578ST	20.4 CuFt, -40°C to -86°C, Upright, 115 V 60 HZ	Contact for Quote
DW-86L728SAT	25.7 CuFt, -40°C to -86°C, Upright, 220 V 60 HZ	Contact for Quote
DW-86L728ST	25.7 CuFt, -40°C to -86°C, Upright, 115 V 60 HZ	Contact for Quote

Energy Star® Certified



GENERAL EQUIPMENT

- Stainless steel chamber provides premier temperature uniformity
- Proven reliable, maintenance-free Incu-Shaker™ motor drive system

- Bright, intuitive touch-screen controls
- Instantly change flask clamps with MAGIC Clamp™ accessories
- Included pull-out adjustable shelf for static incubations

New!

Incu-Shaker™ Shaking Incubator

ITEM #	DESCRIPTION	QTY	PRICE
H3020	2L Stackable Incubator, Ambient +5 to 60°C, 115V	1/ea	\$9,995.00
H3022	2LR Stackable Incubator, 4°C to 60°C, 115V	1/ea	\$12,295.00



- Redesigned to accept two 1 L Flasks
- Increased temperature control up to 70°C
- 2-year warranty



PR1MA™ Mini Incubated Shaker

ITEM #	DESCRIPTION	QTY	PRICE
IS-300	Mini Incubated Shaker, Ambient + 5°C to 70°C, Max Speed 300 rpm, 9.5 x 11.5 in. Platform	1/ea	\$3,598.97
IS-PLAT	MAGic Clamp™ Platform For PR1MA™ Mini Incubated Shaker	1/ea	\$296.13
H1000-MR-CMB	MAGic Clamp™ Combo, 125 mL, 250 mL, 500 mL Flasks	1/ea	\$52.63

Platforms, clamps and racks available for 1.5 mL to 2 L and microplates

- Exceptional temperature uniformity
- Touch screen control over time, speed and temperature
- Horizontally circular 19 mm orbit for aeration & mixing
- 2-year warranty

10 L Incubated Shaker

ITEM #	DESCRIPTION	QTY	PRICE
IS-1010	Incubated Shaker, Ambient +5°C to 70°C, Max Speed 300 rpm, 18 x 18 in. Platform	1/ea	\$7,495.31
IS-1010R	Refrigerated Incubated Shaker, Ambient -15°C to 60°C, Max Speed 300 rpm, 18 x 18 in. Platform	1/ea	\$10,596.02
IS-1010-PLAT	Magic Clamp™ Platform For PR1MA™ Incubated Shaker	1/ea	\$413.65
H1000-MR-CMB	MAGic Clamp™ Combo, 125 mL, 250 mL, 500 mL Flasks	1/ea	\$44.74

Platforms, clamps and racks available for 1.5 mL to 2 L and microplates



MAGic Clamp™ system allows for fast, customizable sharing options!



Never screw in a clamp again!

GLOVES



Non-Sterile, Powder-Free,
Ambidextrous, Finger
Textured, Indigo Color, 2 mil,
100% Latex-Free



Aurelia™ Sonic®

ITEM #	SIZE	QTY	PRICE	PROMO PRICE
93775	XS	300/bx	\$65.00	\$23.00
93776	S	300/bx	\$65.00	\$23.00
93777	M	300/bx	\$65.00	\$23.00
93778	L	300/bx	\$65.00	\$23.00
93779	XL	270/bx	\$65.00	\$23.00

Aurelia™ Sonic® 100

ITEM #	SIZE	QTY	PRICE	PROMO PRICE
9377B5	XS	100/bx	\$30.00	\$10.00
9377B6	S	100/bx	\$30.00	\$10.00
9377B7	M	100/bx	\$30.00	\$10.00
9377B8	L	100/bx	\$30.00	\$10.00
9377B9	XL	100/bx	\$30.00	\$10.00

Non-Sterile, Powder-Free,
Ambidextrous, Finger
Textured, Transblue Color,
2 mil, 100% Latex-Free



Aurelia™ Amazing®

ITEM #	SIZE	QTY	PRICE	PROMO PRICE
92885	XS	300/bx	\$65.00	\$23.00
92886	S	300/bx	\$65.00	\$23.00
92887	M	300/bx	\$65.00	\$23.00
92888	L	300/bx	\$65.00	\$23.00
92889	XL	270/bx	\$65.00	\$23.00

Non-Sterile, Powder-Free,
Ambidextrous, Finger
Textured, Transblue Color,
3.2 mil, 100% Latex-Free



Aurelia™ Transform®

ITEM #	SIZE	QTY	PRICE	PROMO PRICE
98895	XS	200/bx	\$46.00	\$22.00
98896	S	200/bx	\$46.00	\$22.00
98897	M	200/bx	\$46.00	\$22.00
98898	L	200/bx	\$46.00	\$22.00
98899	XL	200/bx	\$46.00	\$22.00

Non-Sterile, Powder-Free,
Ambidextrous, Finger
Textured, Sky Blue Color,
4 mil, 100% Latex-Free



Aurelia™ Protégé®

ITEM #	SIZE	QTY	PRICE	PROMO PRICE
93995	XS	100/bx	\$38.00	\$12.00
93996	S	100/bx	\$38.00	\$12.00
93997	M	100/bx	\$38.00	\$12.00
93998	L	100/bx	\$38.00	\$12.00
93999	XL	100/bx	\$38.00	\$12.00

Non-Sterile, Powder-Free,
Ambidextrous, Finger
Textured, Teal Color, 2.5
mil, 100% Latex-Free



Aurelia™ Perform®

ITEM #	SIZE	QTY	PRICE	PROMO PRICE
92395	XS	200/bx	\$59.00	\$18.00
92396	S	200/bx	\$59.00	\$18.00
92397	M	200/bx	\$59.00	\$18.00
92398	L	200/bx	\$59.00	\$18.00
92399	XL	200/bx	\$59.00	\$18.00

Offer valid 01/01/24 - 03/31/24. This promo cannot be combined with other promotions or discounts. All terms apply.

GLOVES

Non-Sterile, Powder-Free,
Ambidextrous, Blue Color, 3-6 mil



AMMEX® Nitrile Powder-Free Gloves

ITEM #	SIZE	QTY	PRICE	PROMO PRICE
NITRILE-S	S	1,000/cs	\$149.00	\$70.00
NITRILE-M	M	1,000/cs	\$149.00	\$70.00
NITRILE-L	L	1,000/cs	\$149.00	\$70.00
NITRILE-XL	XL	1,000/cs	\$149.00	\$70.00

Also available by the box!

Offer valid 01/01/24 - 03/31/24. This promo cannot be combined with other promotions or discounts. All terms apply.

- EcoTek® Biodegradability Technology accelerates landfill breakdown without any performance loss
- Textured surface for excellent wet and dry grip

TrueForm® Biodegradable Nitrile Gloves

ITEM #	SIZE	QTY	PRICE
N301341	XS (5 ½ - 6 in.)	100/bx, 10 bx/cs	\$155.00
N301342	S (6 ½ - 7 in.)	100/bx, 10 bx/cs	\$155.00
N301343	M (7 ½ - 8 in.)	100/bx, 10 bx/cs	\$155.00
N301344	L (8 ½ - 9 in.)	100/bx, 10 bx/cs	\$155.00
N301345	XL (9 ½ - 10 in.)	100/bx, 10 bx/cs	\$155.00

4.7 mil Finger, 3.1 mil Palm, Non-Sterile, Ambidextrous, Royal Blue Color



- Dry Core® Moisture Management Technology pulls sweat away from the skin leaving the wearer dryer
- EcoTek® Biodegradability Technology accelerates landfill breakdown without any performance loss
- Fully textured surface for superior wet and oily grip

- Silicone-free for critical environments
- 1.5 AQL exceeds laboratory standards
- ANSI Level 3 Abrasion

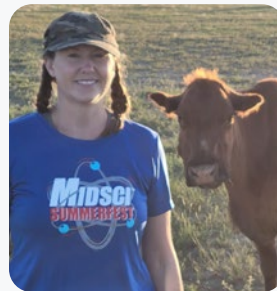
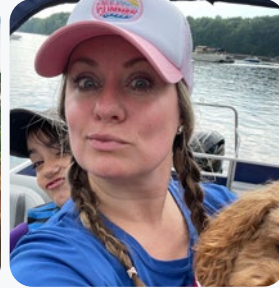
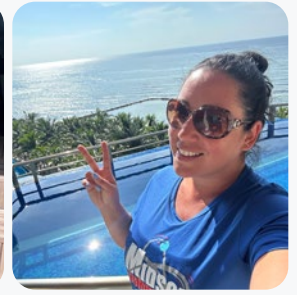
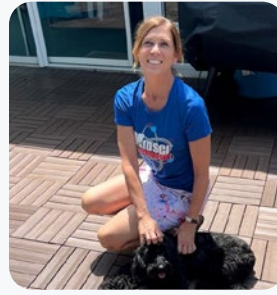


PowerForm® Nitrile Gloves with Dry Core®

ITEM #	SIZE	QTY	PRICE
N106551	XS (5 ½ - 6 in.)	50/bx, 10 bx/cs	\$200.00
N106552	S (6 ½ - 7 in.)	50/bx, 10 bx/cs	\$200.00
N106553	M (7 ½ - 8 in.)	50/bx, 10 bx/cs	\$200.00
N106554	L (8 ½ - 9 in.)	50/bx, 10 bx/cs	\$200.00
N106555	XL (9 ½ - 10 in.)	50/bx, 10 bx/cs	\$200.00

6.9 mil Finger, 6.1 mil Palm, Non-Sterile, Ambidextrous, Blue Color

MidSCI™



We're happy to help you!



**Family owned and
trusted since 1983**



**Stocked products ship
in 24 hours**

**Thank you for your
continued support.**



**Responses within
24 hours**



**REAL people answer-
ing your questions and
placing your orders**

ORDER TODAY! midsci.com • custserv@midsci.com • 800.227.9997 • f: 636.225.9998